

VENUE HIRE

YOUR EVENT SURROUNDED BY HISTORY

The galleries of the Medeiros e Almeida Museum are extraordinary venues for entertaining, proving unforgettable settings for dinners, receptions, lectures, seminars, concerts and other functions.

The Museum offers after-hours entertaining, providing exclusive event opportunities and private access to its exhibitions and permanent collection where over 2,000 years of Art live.

Our team is experienced in delivering successful and creative experiences for corporate or private events.



THE MUSEUM

The Museum is the former private residence of António de Medeiros e Almeida (1895-1986), who turned it into a museum in 1972. Medeiros e Almeida was a Portuguese businessman, collector and benefactor who gathered a decorative arts collection and bequeathed it to his country.

This treasure house, located in central Lisbon, has 27 galleries and displays 2,000 works of art of fabulous scope and diversity. These works include painting, furniture, sculpture, textiles, watches and clocks, jewellery, ceramics, fans and sacred art, ranging from the 2nd century B.C.E. to the 20th century.

You cannot miss the old wing, which was inhabited by the collector and his wife, with its domestic yet luxurious twist, or the new wing, built by the couple to enlarge the exhibition space. There you will find the Lake room with its tile panels, the Watches and Clocks room with 200 watches on display, or the Chinese ceramics room with rare vessels, such as some of the first porcelain orders made in China for the European, depicting Portuguese symbols and inscriptions.

A fabulous collection in a prestigious location!

OUR SPACES:

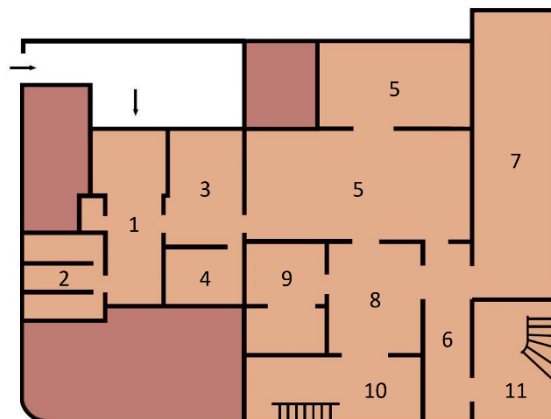
CHAPEL

Area: 60m²

Capacity:

30 guests (seated)

60 guests (standing)



No. 7 – Rosa Araújo street
Mouzinho da Silveira street – access by a flight of stairs



The Chapel is a secular space where sacred art is exhibited. It is the ideal space for a small dinner, drinks, receptions, book launches or seminars.

The unique and spectacular 18th-century baroque Indo-Portuguese pulpit and the typical Portuguese carved and gilded 18th-century altarpiece standing on the opposite wall provide a spectacular backdrop for events.

The vestments on display and the silver liturgical objects were used during the collector's life in his private chapel upstairs.

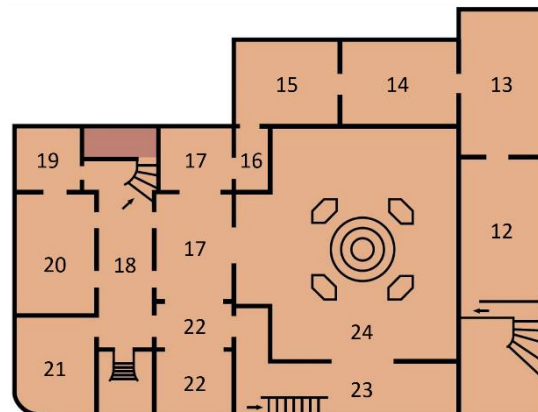
TAPESTRY ROOM

Area: 57m²

Capacity:

30 guests (seated)

50 guests (standing)



No. 12 – Mouzinho da Silveira street - access by flights of stairs
Rosa Araújo street- access by flights of stairs



The Tapestry room is a small, sophisticated space in which to impress your guests.

The display includes a rare Meissen porcelain group, signed and dated - E. ANDRESEN 1888 -, composed of a central clock and two six-light candelabra decorated with detailed bunches of flowers and allusions to night and day.

The room also features two early 18th-century French tapestries, a baroque pair of paintings by the celebrated François Boucher, French furniture and marble floors that provide a spectacular backdrop for entertaining your special group.

The space is accessible by the hall's grand staircase which adds a dramatic touch to its entrance.

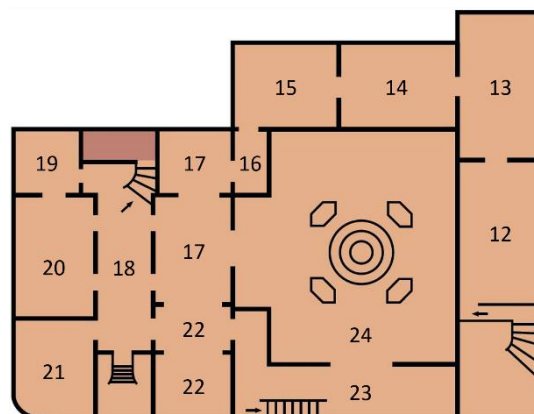
LAKE ROOM

Area: 200m²

Capacity:

120 guests (seated)

200 guests (standing)



No. 24 - Mouzinho da Silveira street - access by flights of stairs
Rosa Araújo street- access by flights of stairs



With its high 18th-century Portuguese wooden ceiling depicting the Four Continents and the spectacular 18th-century Portuguese blue and white tile-covered walls, the Lake room is a stunning setting to host a large banquet or reception.

In this ample interior courtyard, evocative of a garden, you'll find large-scale sculptures and four showcases, beautifully arranged around the central "lake" that display the collections of jewels and Chinese and European snuff boxes.

For a meeting, seminar or product launch, our largest and most prestigious space can accommodate different seating layouts (theatre, cabaret).

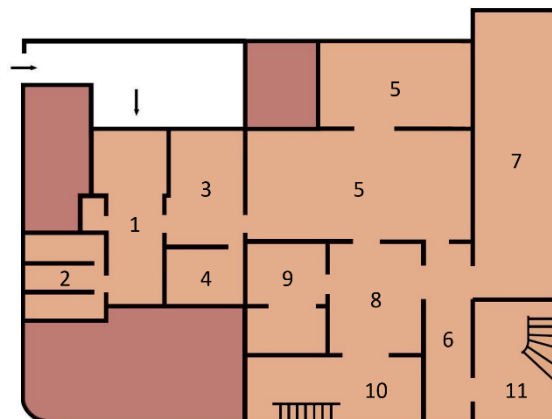
TEMPORARY EXHIBITION ROOMS

Area: 100m² + 40m²

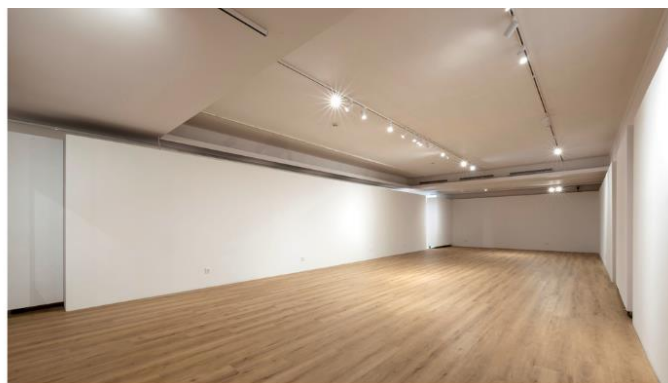
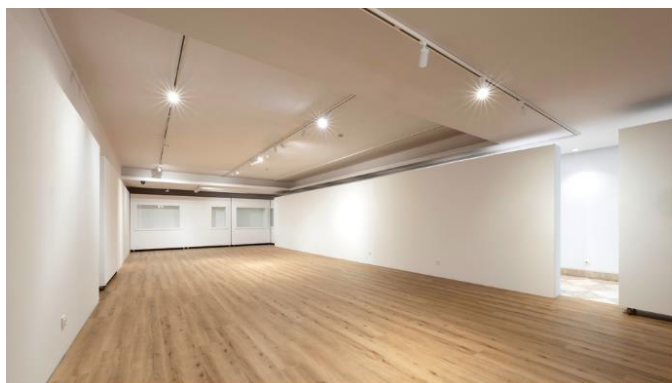
Capacity:

100 guests (seated)

150 guests (standing)



No. 5+5 - Rosa Araújo street – street level
Mouzinho da Silveira street – access by flights of stairs



The two adjacent versatile spaces, located close to the Museum's entrance, provide a 'blank canvas' for clients wishing to brand the space.

When not in use for our temporary exhibitions, you can hire the spaces day or night, host your event and still allow guests to look around the Museum collections.

The temporary exhibition rooms are wheelchair accessible.

CONDITIONS AND INFORMATION

The venues should respect the Museum's internal conduct rules and dedicated cultural ambience.

Hours (exclusive hire)

Monday to Saturday – from 5:00 pm to 12.00 pm

Note: daytime hire is only available for the Temporary exhibition rooms*

Sunday – all-day

Extensions from midnight are possible – prices (per hour) upon request

Facilities/services available

- Catering, from light refreshments to three-course meals
- Pre-dinner drinks
- Furniture (room dressing)
- Audio-visual equipment (Projector with portable screen / Portable handheld and lapel microphone / PA column)

Guided tours

Docent-led pre-dinner, tailor-made tours of the Museum may be booked allowing guests to get to know the priceless collections: Portuguese, English, French, Spanish and Italian

Note: There is no natural lighting in the Museum galleries

Entrance

There are three possible entrances

Rosa Araújo street, 41

Mouzinho da Silveira street, 4

Mouzinho da Silveira street, 6

Toilets

Ladies / Gents / Handicap - street level (Rosa Araújo street)

Cloakroom

A cloakroom is available

Accessibility

Wheelchair access - ground floor only (Rosa Araújo street)

Smoking is not allowed in the building

Security

Mandatory presence of 2 guards

Complimentary Wi-Fi

Prices

Upon request

Fees are subject to VAT (23%)

GETTING HERE

The Museum is located in the centre of Lisbon, a few steps away from Liberdade Avenue and the Marquis of Pombal Square. There are several central bus and train stations within a 2 minutes walk.

Main address:

Rosa Araújo street, 41 Lisbon

Public parking:

[Parque Alexandre Herculano](#)

(Mouzinho da Silveira street, 1250-165 Lisbon)



GET IN TOUCH

To make a booking, or for more information, please contact our events managers:

Madalena Costa Guerra / Miguel Cordeiro de Sousa

The experienced, dedicated team is available to assist organisers with every element of the event, from site visits, administration, technology options and pre-planning through to onsite management on the day. We also work with a host of accredited suppliers to make your event a success.

Email: events@museumedeirosealmeida.pt

Telephone: +351 926 214 965

FOLLOW US





